

Kids
Handwrite™



RESOURCE MATERIAL



Italic Print Exemplars



COPYRIGHT NOTICE

© 2024 Calgary, Alberta

Canadian copyright laws protect this Resource. Kids Handwrite™ Calgary, Alberta, owns the copyright in Parts II and III of this Resource.

The images in Parts II and III were sourced from **Pixabay** (<https://pixabay.com>) and **Vecteezy** (<https://www.vecteezy.com>). Other colouring pages in Section 1 are Procreate Stamps from Tattoo Worker Studio, available on Design Cuts . All images are subject to their applicable copyright licenses. The links to the images used in the Resource Material can be found in Section 15 Image Attribution.

This work is licensed under **CC BY-NC-ND 4.0**. Attribution-NonCommercial-Share Alike 4.0 International. Under this Creative Commons license, you are free to copy and redistribute the material in any medium or format, and the copyright owners, as licensors, cannot revoke these freedoms as long as you follow the license terms. The terms are as follows:

- **Attribution** - You must give appropriate credit, provide a link to the license, and indicate if changes were made. You may do so in any reasonable manner, but not in any way that suggests the licensor endorses you or your use.
- **Non-Commercial** - You may not use the material for commercial purposes.
- **No Derivatives** - If you remix, transform, or build upon the material, you may not distribute the modified material.
- **No additional restrictions** - You may not apply legal terms or technological measures that legally restrict others from doing anything the license permits.
- **Notices** - You do not have to comply with the license for elements of the material in the public domain or where your use is permitted by an applicable exception or limitation.
- **No warranties are given** - The license may not give you all the permissions necessary for your intended use. For example, other rights such as publicity, privacy, or moral rights may limit how you use the material.

Section 4 – ITALIC PRINT EXEMPLARS

1. Exemplars

An exemplar is a set of lowercase and uppercase letters used to learn a particular handwriting style, such as the Italic script.

Model lowercase and uppercase letters are necessary as a starting point. Although students will develop a handwriting style that is unique and natural for them, they must master the basic shapes, the number of strokes, specific stroke directions, and sequences used in the Exemplars to develop legible and fluent Italic print and cursive writing.

The exemplars presented in this Resource are a basic monoline version of an Italic script designed for children’s print and cursive writing. With practice, students will develop legible and fluent print and cursive writing using this model.

2. One-Page Exemplars – Printed Italic

There are four one-page exemplars for printed Italic included in the material:

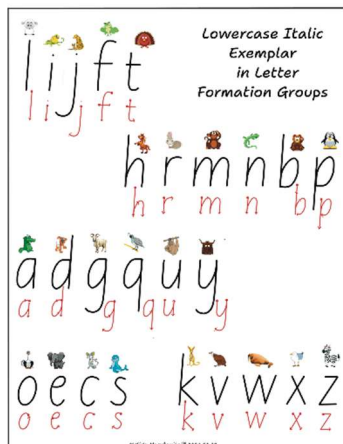
Alphabetical Lowercase Exemplar



Alphabetical Uppercase Exemplar



Lowercase Exemplar by Group



Uppercase Exemplar by Group



3. *Number of Strokes*

All lowercase letters, except *f*, *k*, *t* and *x*, are printed with a single stroke – no pen lifts. The dots above the *i* and *j* are not strokes. Mastering printing lowercase letters using one stroke makes transitioning to cursive writing less difficult.

Conversely, most uppercase Italic letters require multiple strokes, but depending on one's preference, up to ten uppercase letters can be made in one stroke.

4. *Ductus*

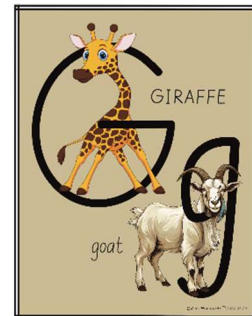
The ductus is the number, sequence and direction of strokes that create a letterform. The ductus for writing Italic lowercase and uppercase letters is shown throughout the material as red dots and red arrows. The red dots indicate where the stroke starts, and the arrows indicate the direction of the stroke. On the Exemplars, the ductus for each letter is in red underneath the letters. On some letters, a black dot indicates where the stroke reverses direction.

Students must be taught the correct starting point, the number of strokes, the direction of each stroke and the traceback stroke associated with each Italic lowercase and uppercase letter. The ductus is the same for both print and cursive lowercase letters.

5. *Italic Alphabet Wall Cards*

There are twenty-six wall cards, one for each letter of the alphabet. Each card shows the print version of the uppercase and lowercase Italic letters with animal illustrations.

These cards can be printed and posted in the classroom for easy reference.



6. *Student Desk Strips*

There are two Italic print desk strips in the Resource. One 8 ½ by 11 page contains two Desk Strips, each with different illustrations. The page is designed to be cut lengthwise to create two strips for distribution to the students.

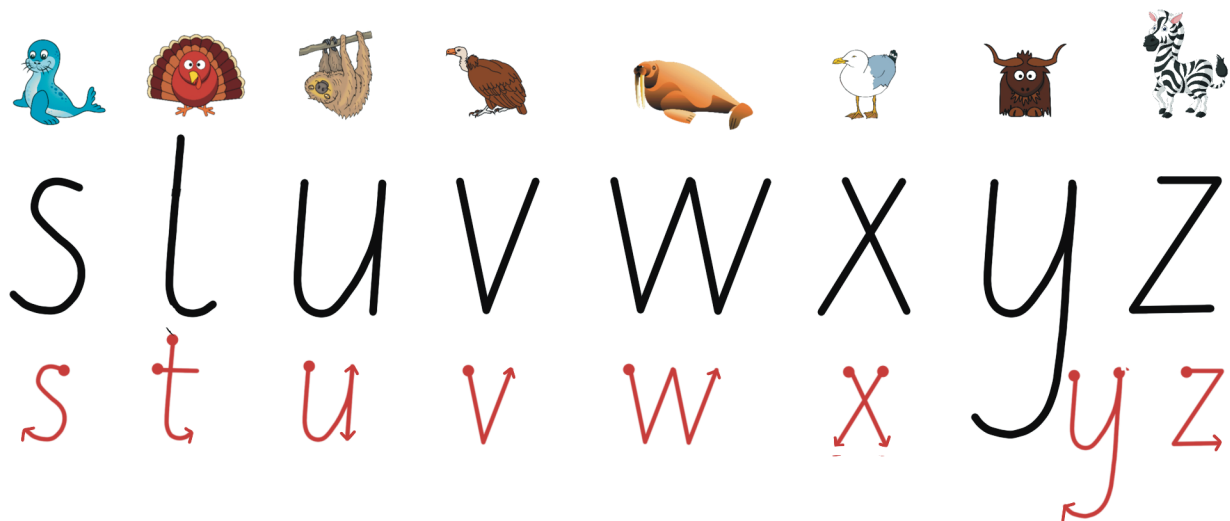
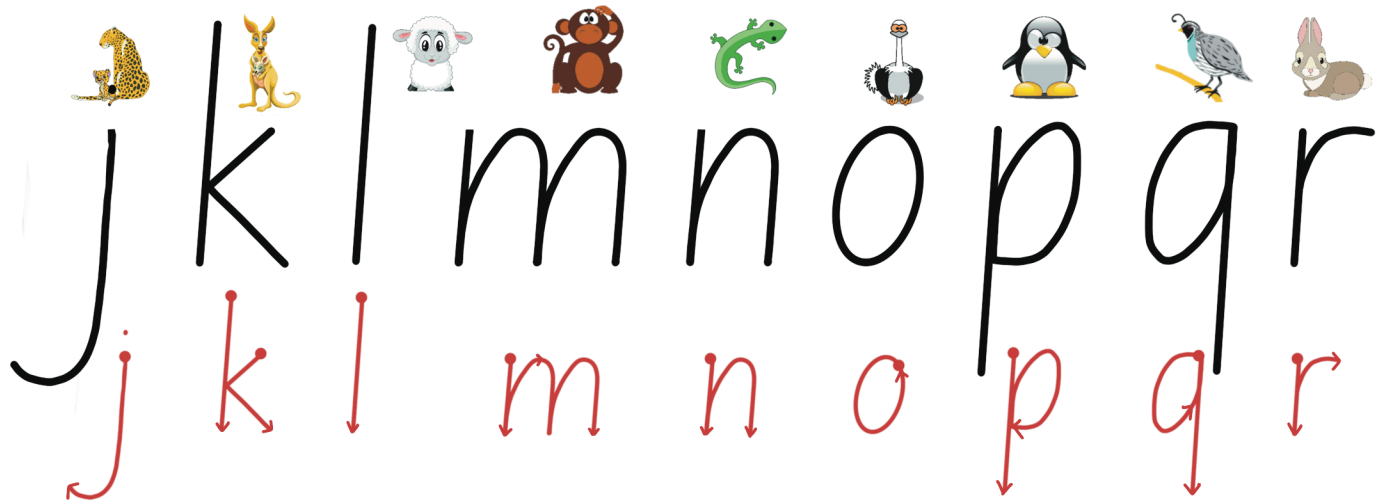
Desk Strip 1:



Desk Strip 2:



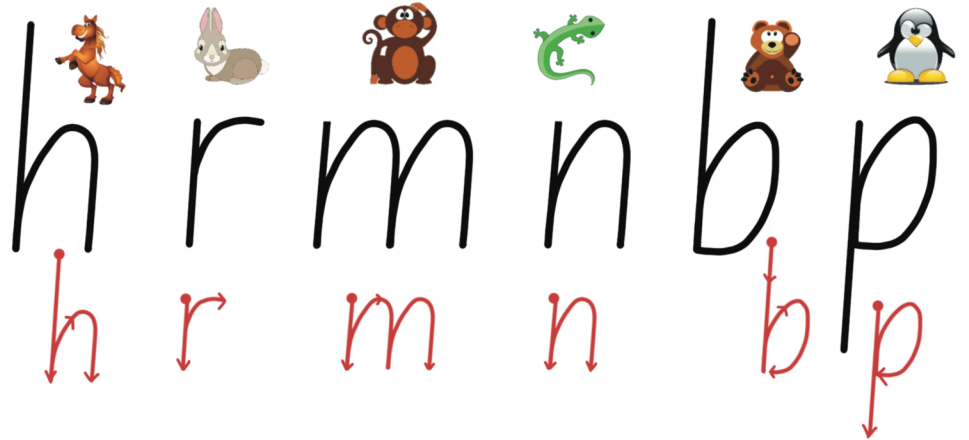
Lowercase Italic Print Exemplar



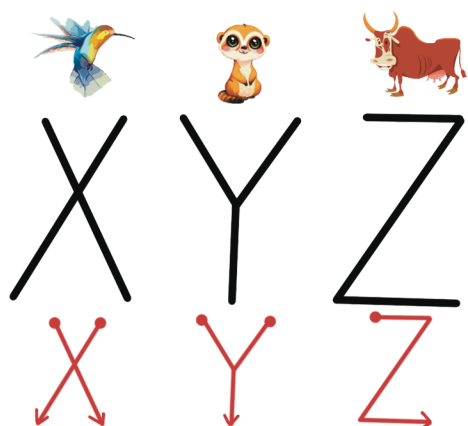
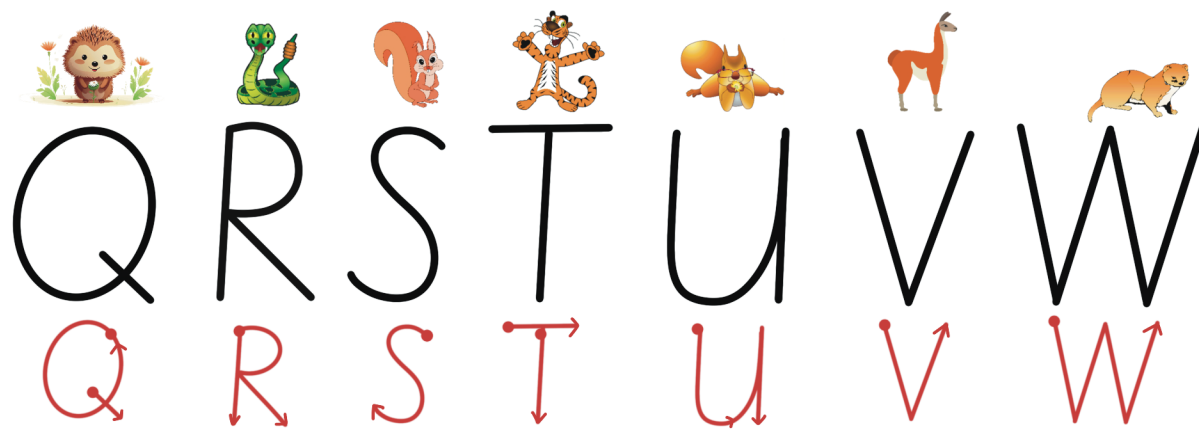
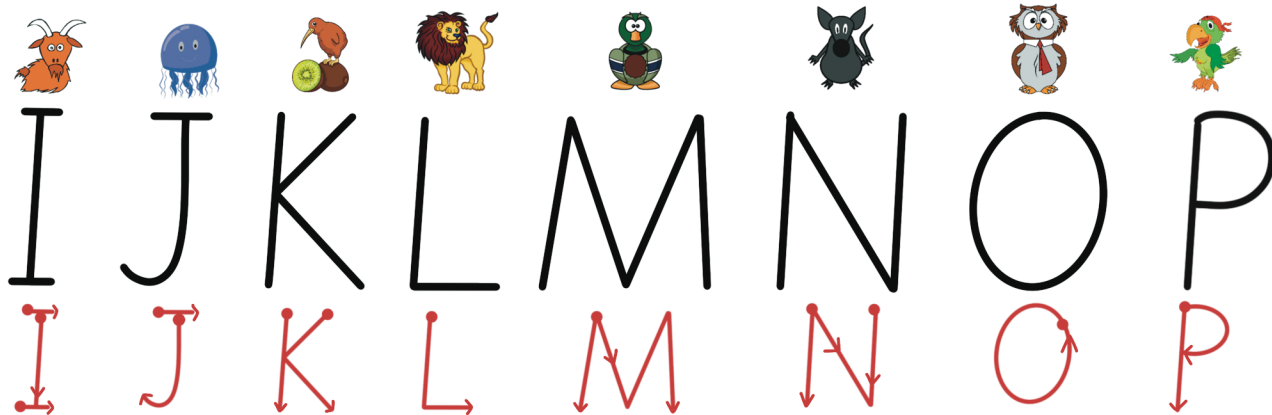
One Stroke Letters: a b c d e g h i j l m n o p q r s u v w y z

Two Stroke Letters: f k t x

Lowercase Italic
Exemplar
in Letter
Formation Groups



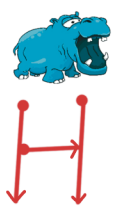
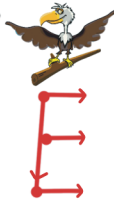
UPPERCASE ITALIC PRINT EXEMPLAR



Narrowest - I J
Narrow - B E F K L P R S
Medium - A H N T U V X Y Z
Wide/Round - C D G O Q
More Wide - M
Widest - W

UPPERCASE ITALIC EXEMPLAR - BY GROUP

E F H I



J L T U



B P C G



O Q D S

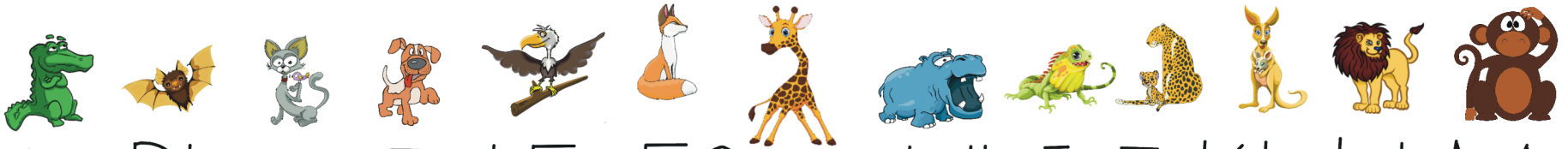


A V K R M



W N X Y Z





Aa Bb Cc Dd Ee Ff Gg Hh Ii Jj Kk Ll Mm

Nn Oo Pp Qq Rr Ss Tt Uu Vv Ww Xx Yy Zz

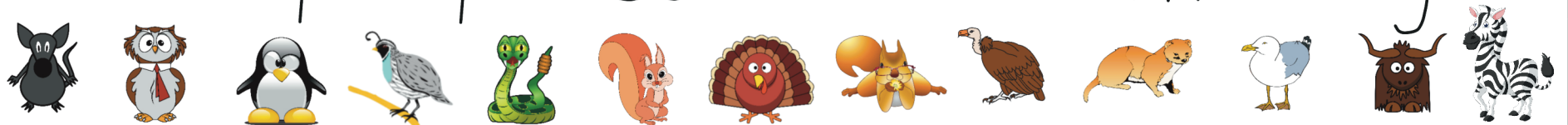


©Kids Handwrite™ 2024-03-29

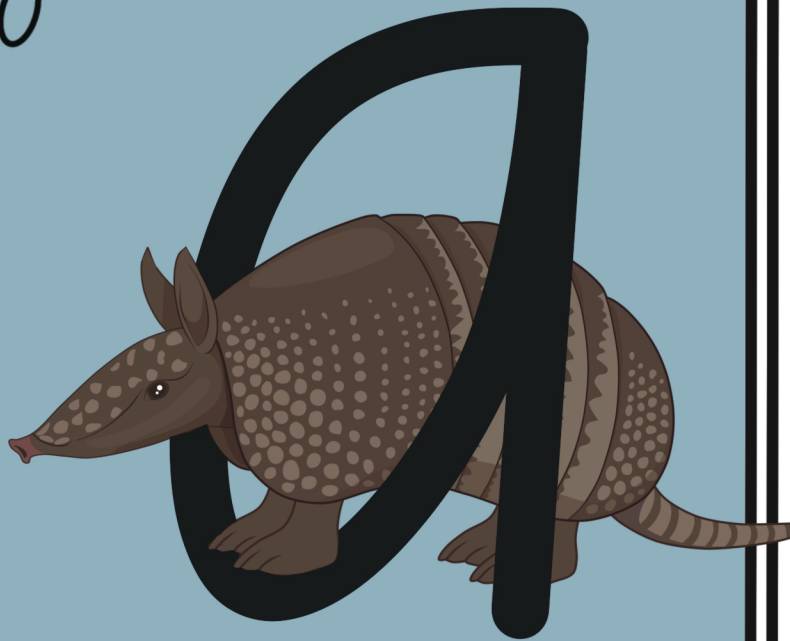


Aa Bb Cc Dd Ee Ff Gg Hh Ii Jj Kk Ll Mm

Nn Oo Pp Qq Rr Ss Tt Uu Vv Ww Xx Yy Zz



armadillo



ALLIGATOR

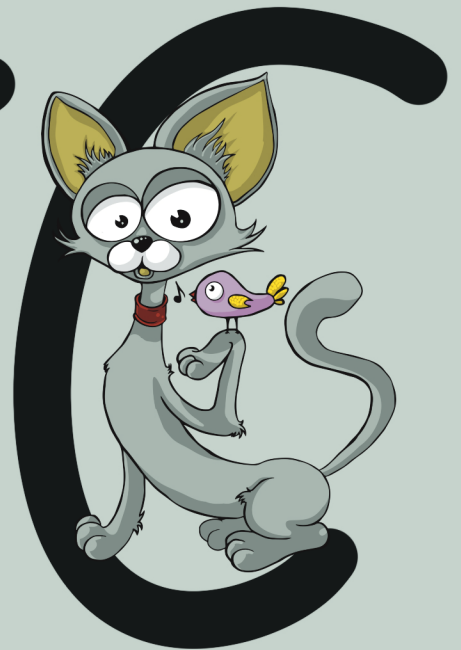
BEAR



bat



CAMEL



cat

DOLPHIN



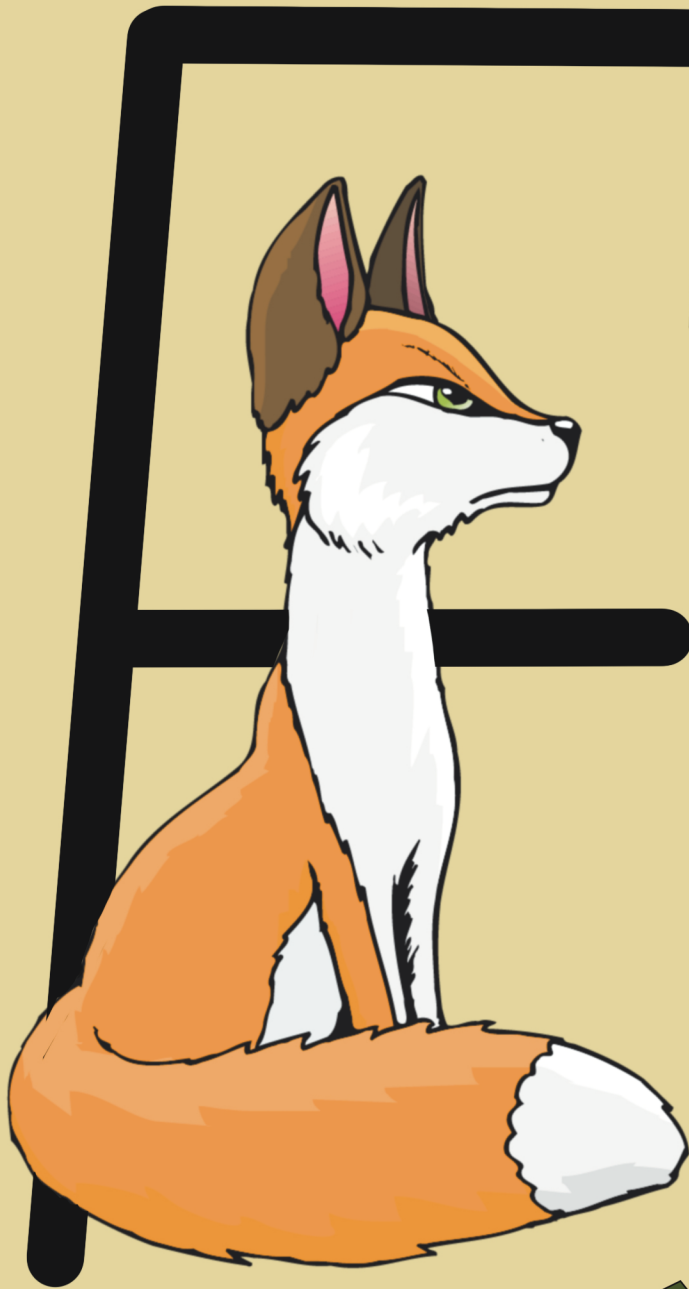
dog



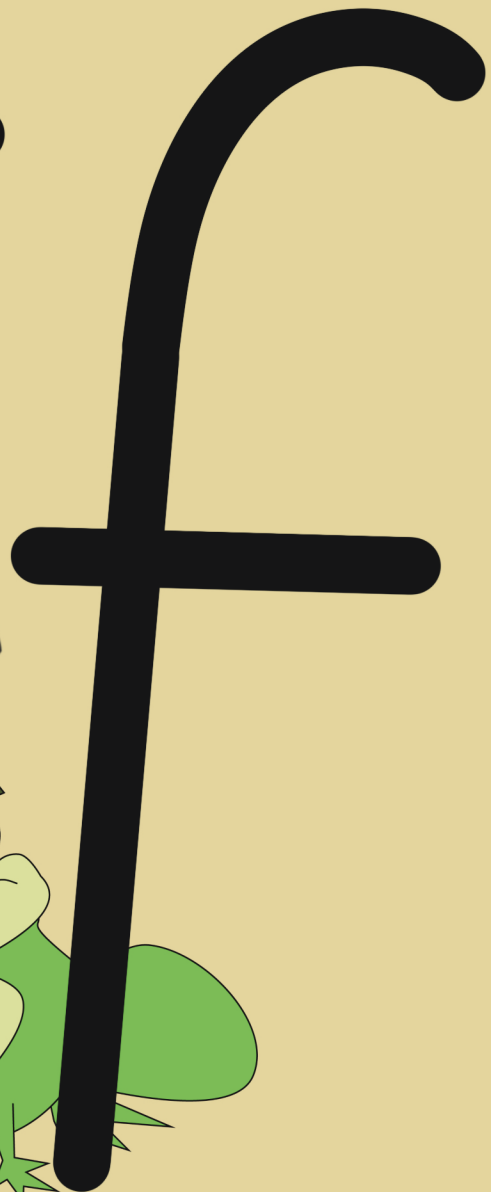
eagle



ELEPHANT



FOX



frog



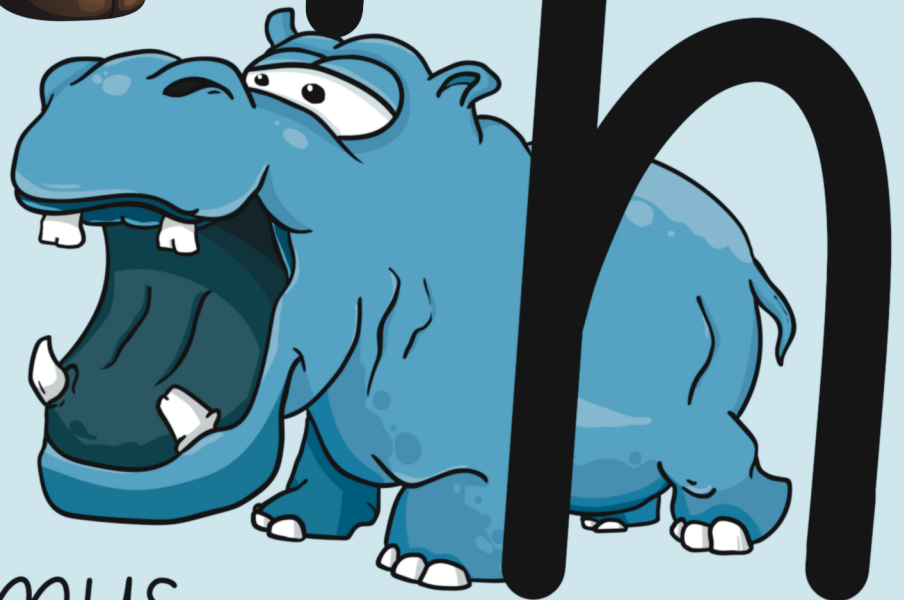
GIRAFFE



goat



HORSE



hippopotamus



IBEX

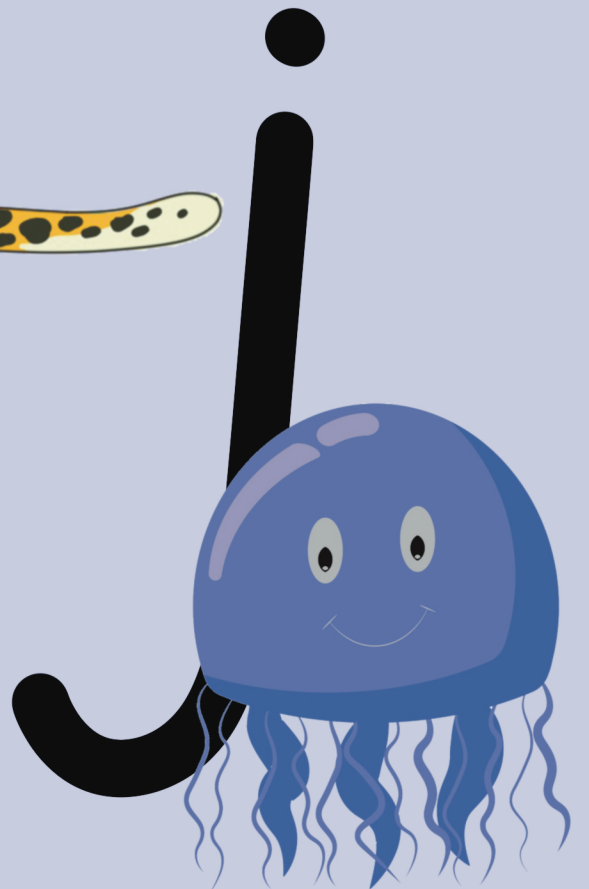


iguana

JAGUAR



jellyfish





KANGAROO



kiwi

LION



lamb



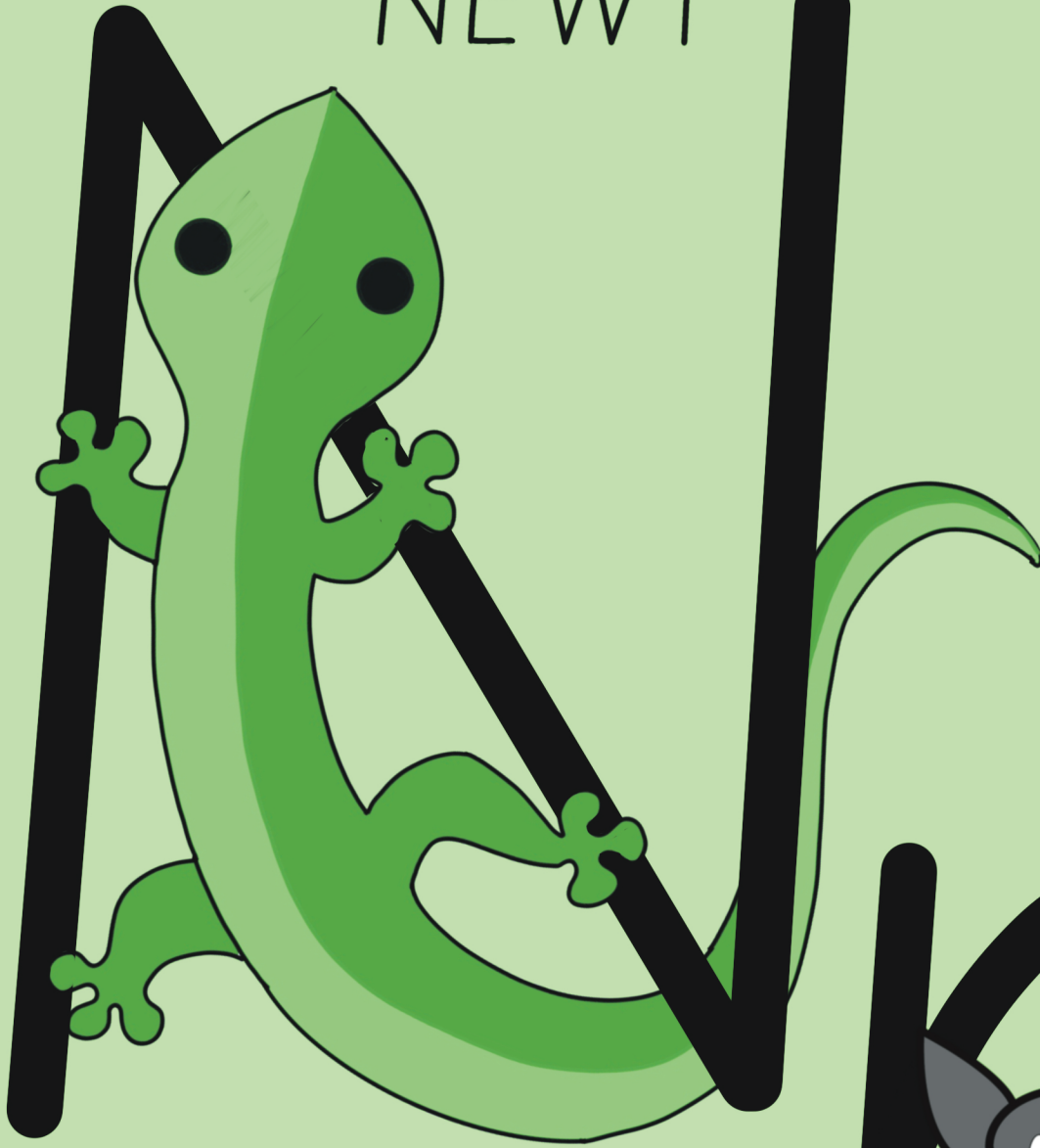


MONKEY

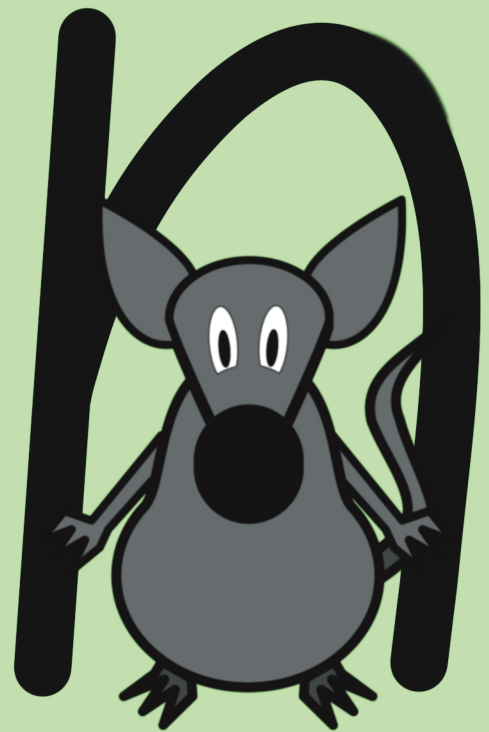
mallard



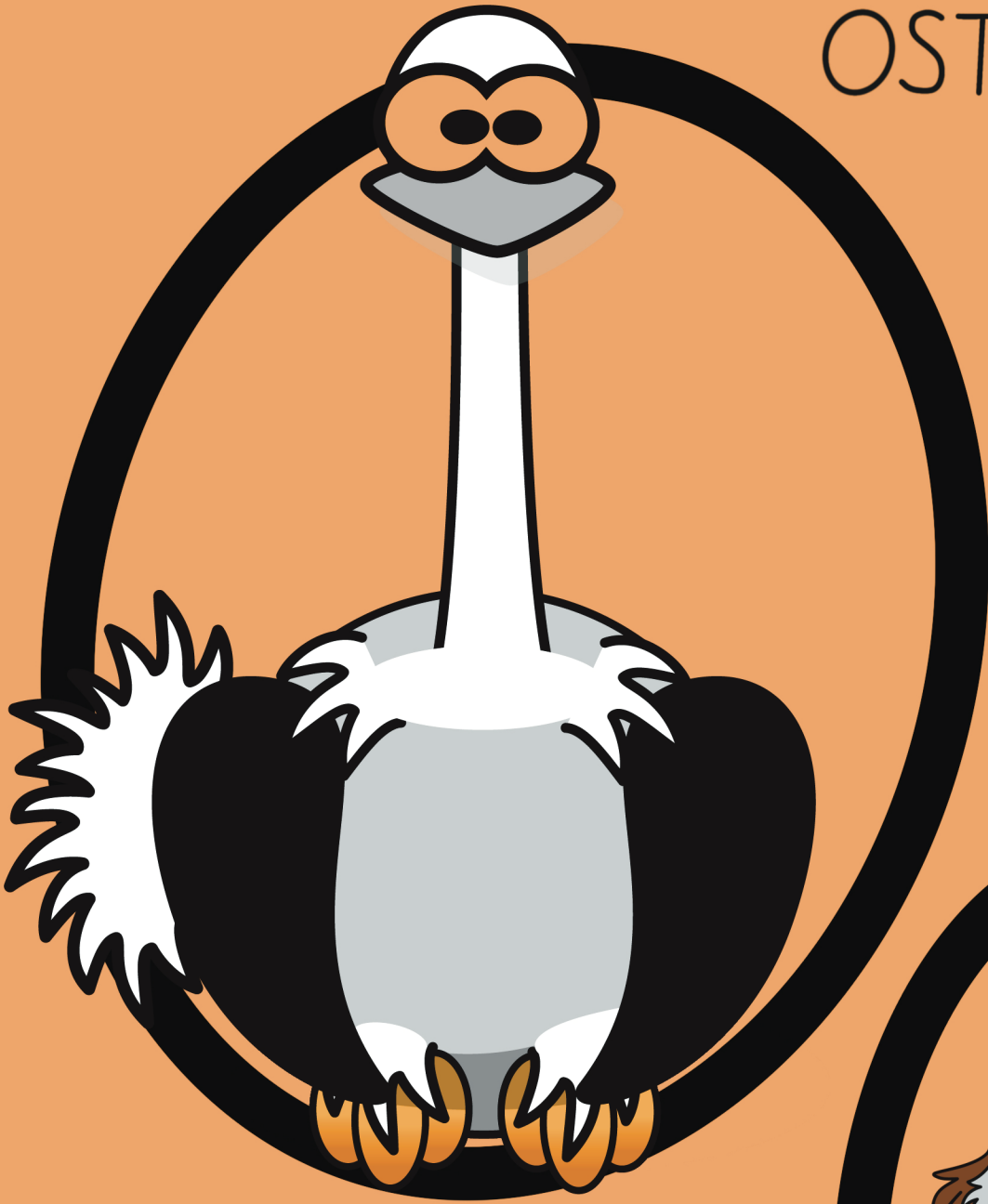
NEWT



norway rat



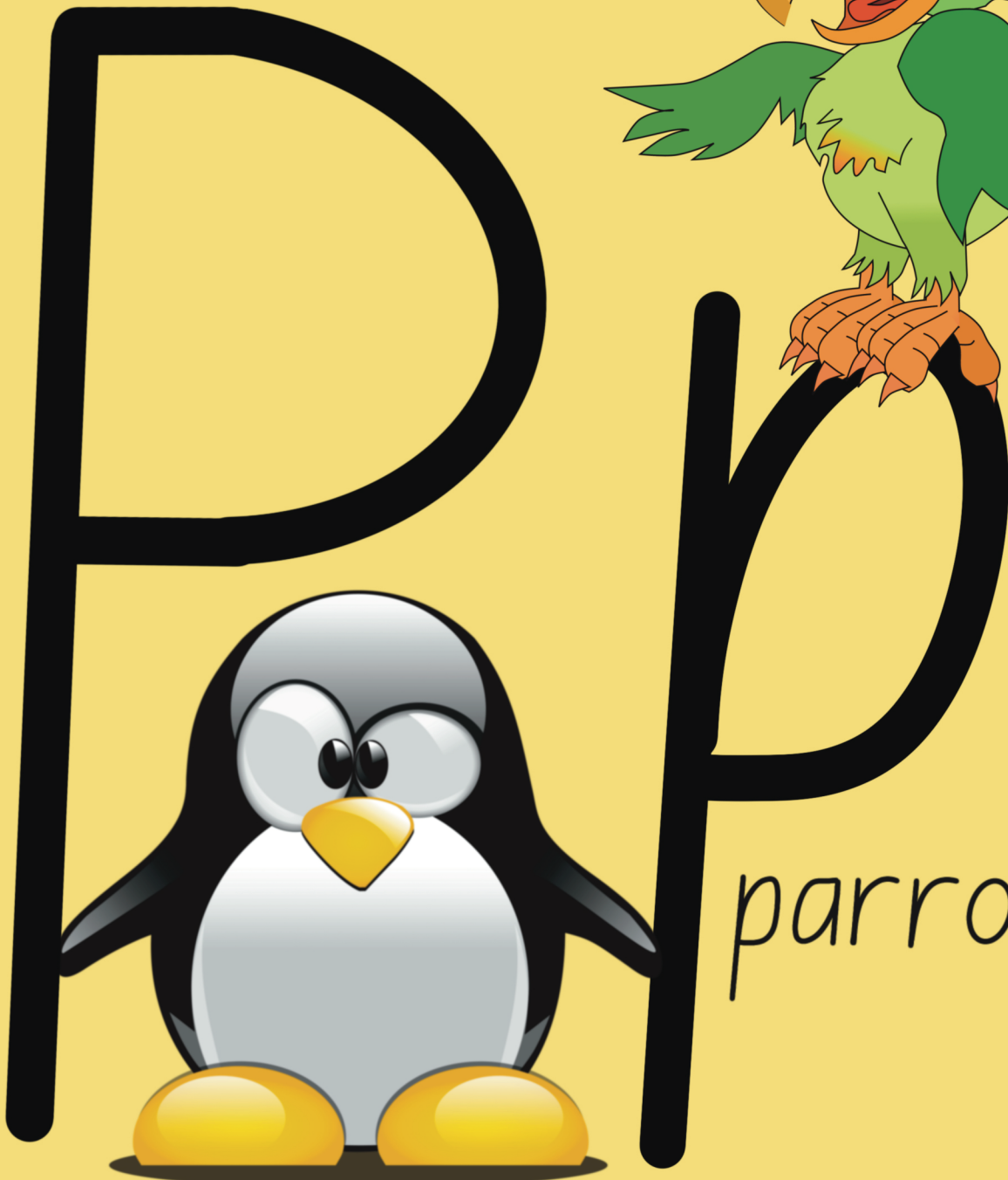
OSTRICH



owl



PENGUIN



parrot

quail

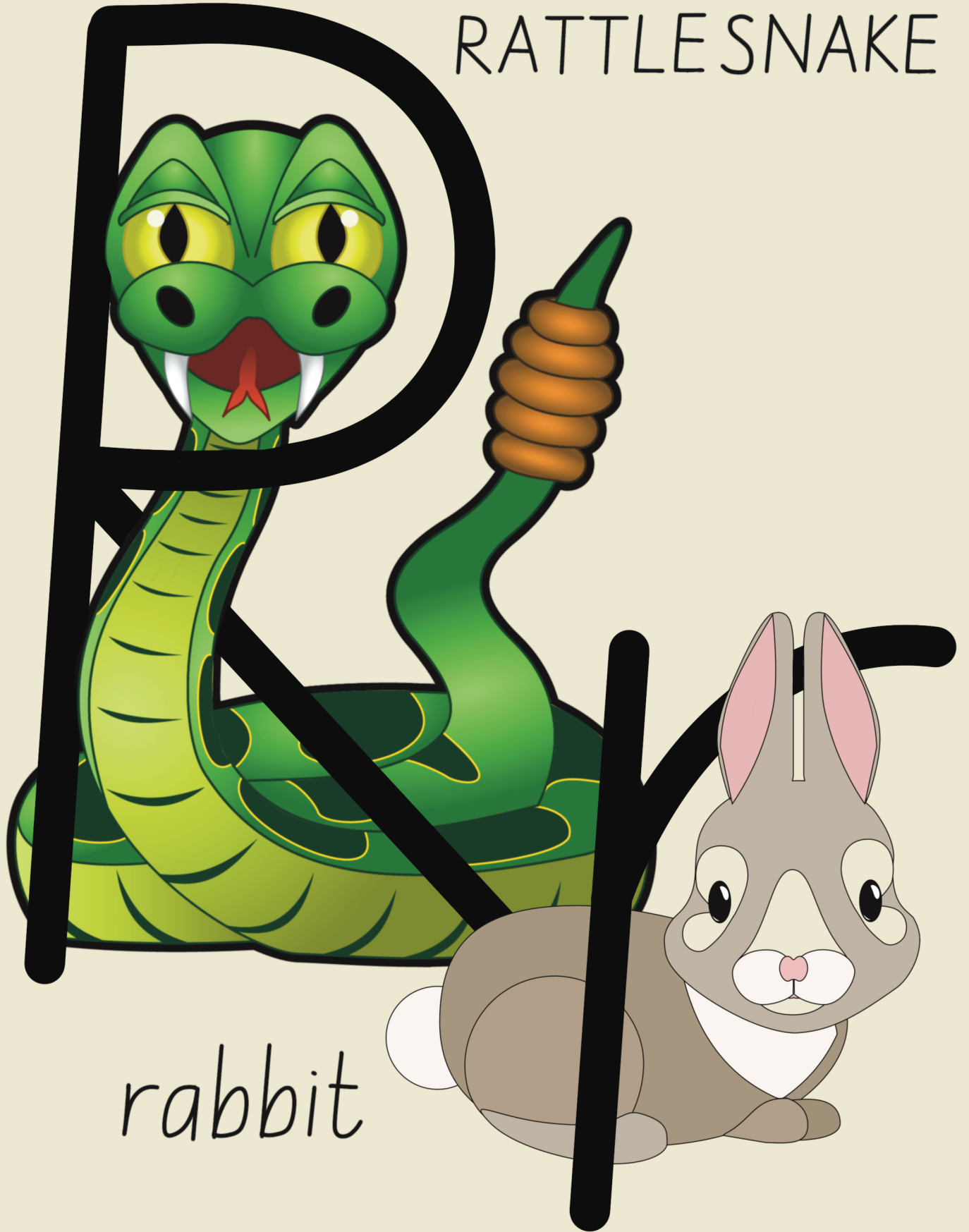


q



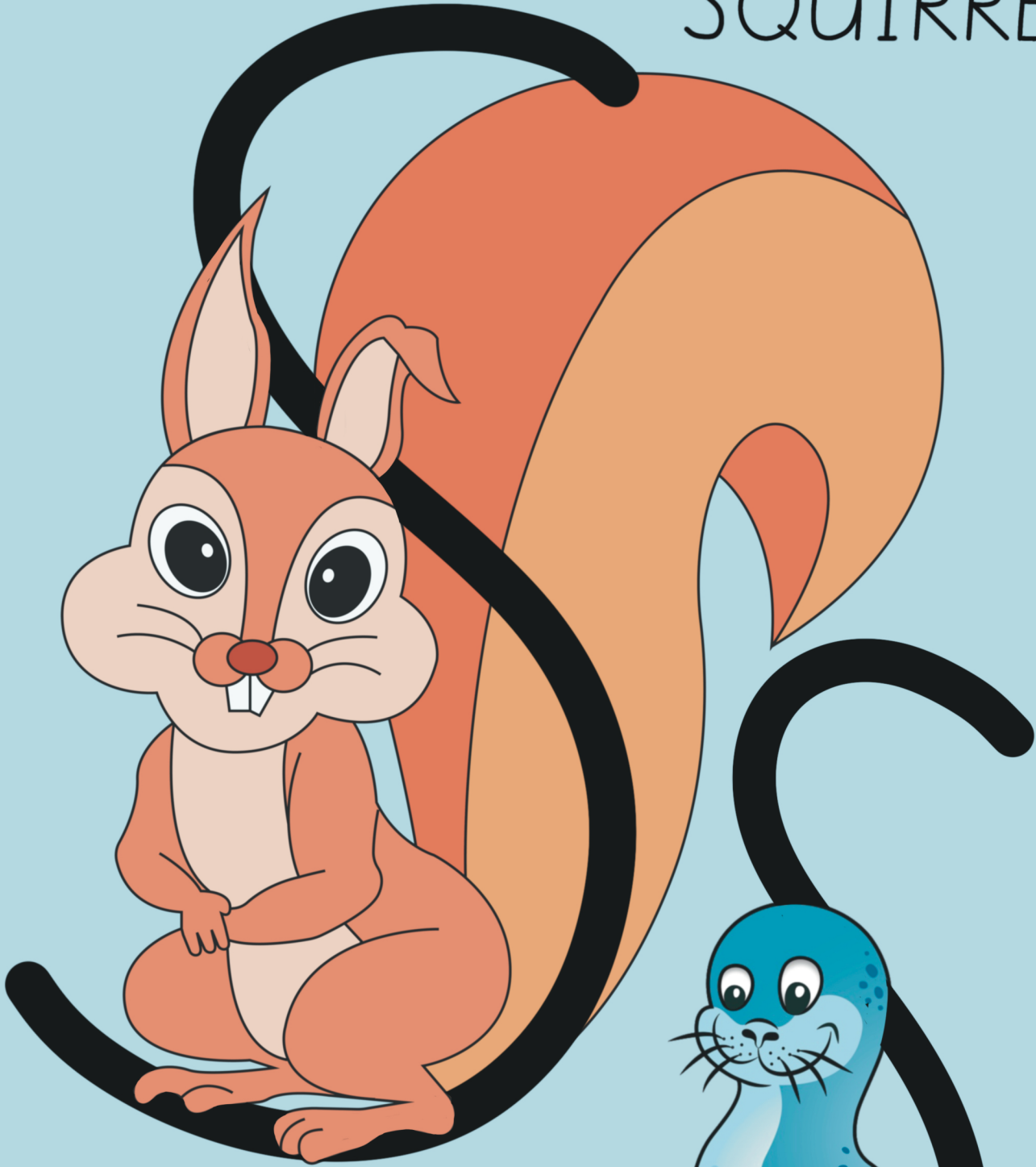
QUOKKA

RATTLESNAKE



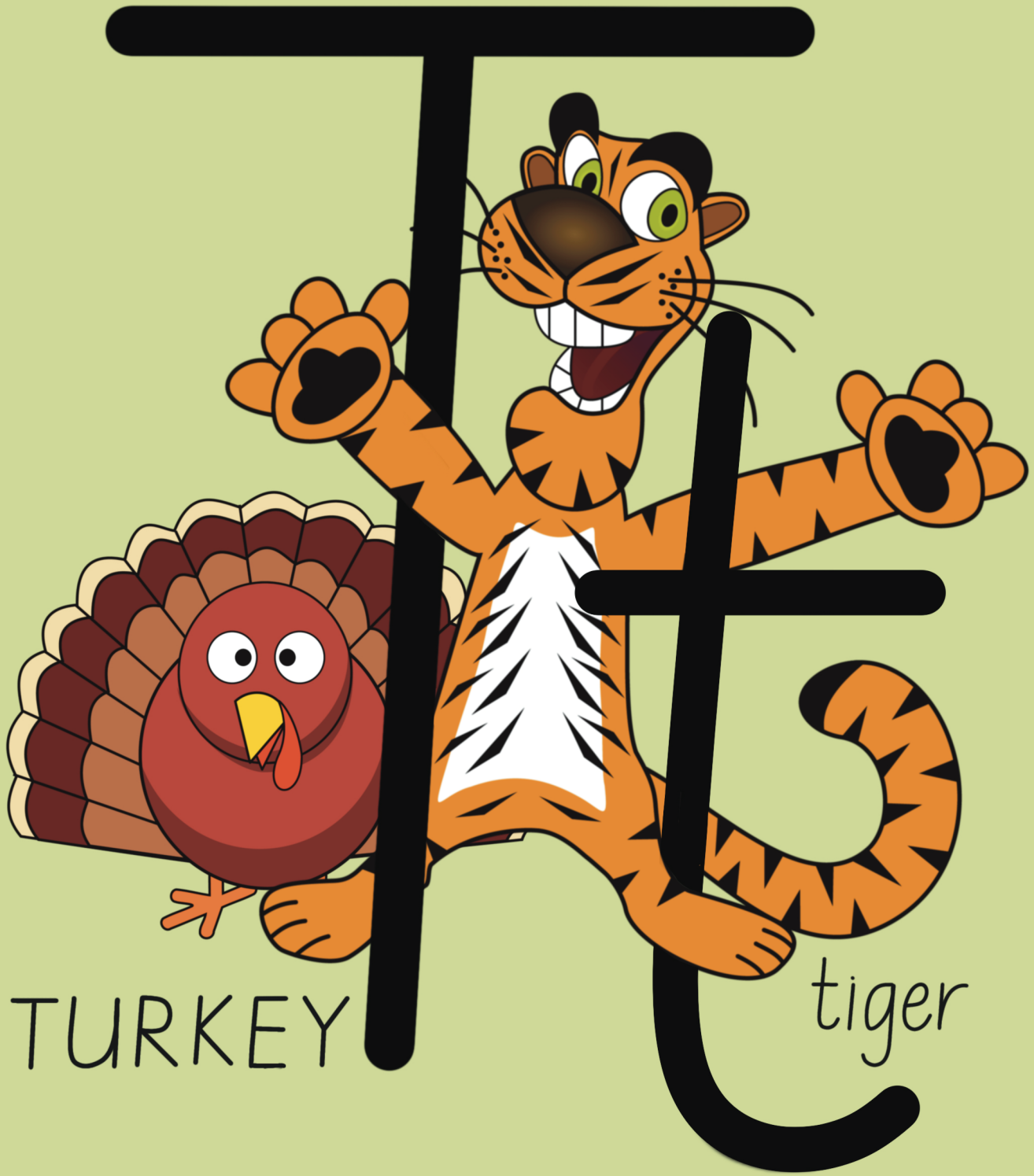
rabbit

SQUIRREL



seal





TURKEY

tiger



UNAU



unita
chipmunk

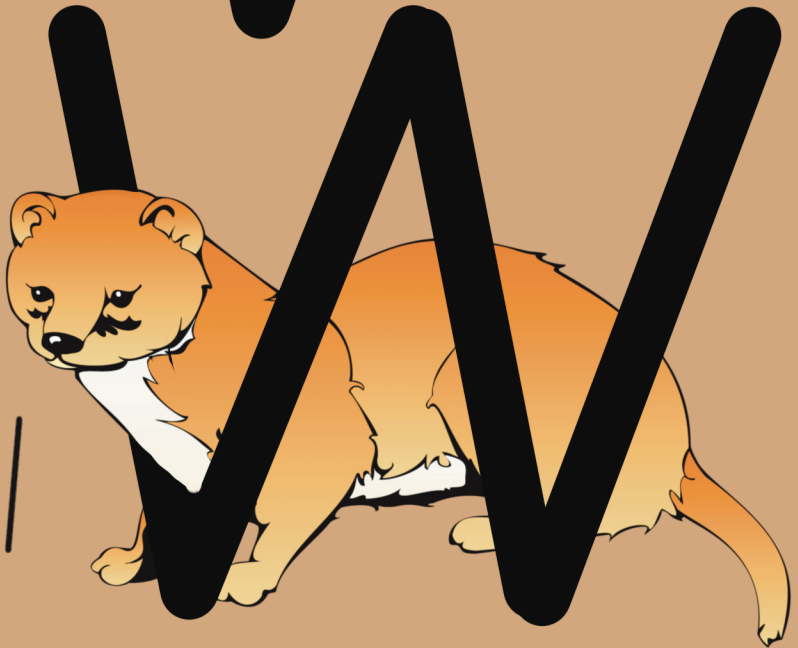
VICUNA



vulture



WALRUS



weasel

XANTUS



xeme

YAK



yellow
mongoose

ZEBU



zebra

